



Garden Route Trail House...

This is our Welcome Letter, to ensure that your stay is nothing but exceptional. These are not house rules, the purpose of this letter is to provide you information of your stay.

INTRODUCTION:

Welcome to Garden Route Trail House, your gateway to the most breathtaking corner of the world! We're thrilled to have you here and want to ensure your stay is nothing short of extraordinary. To make the most of your experience, we've prepared some essential information that will enhance your comfort and safety.

SOLAR POWER:

We offer a very unique accommodation experience. We're proud to power the trail house with solar technology only, providing you with a truly eco-friendly retreat. We do not have any Eskom connectivity. To maintain this green paradise, **we kindly ask that you refrain from using high-power electrical appliances such as hair dryers, straighteners, toasters, heaters, coffee machines or kettles. This small act of mindfulness helps prevent system overloads and keeps our solar setup running smoothly.** While we harness the sun's energy to power your stay, we kindly ask for your cooperation to maximize this sustainable experience. During overcast days, we recommend charging your devices during daylight hours and minimizing the use of outdoor spotlights in the evening to conserve power and turn off any unused lights. We offer a 5KW system, which will ensure a stable power supply for your stay. We've implemented a seamless backup generator system for your comfort. In the rare event that solar power depletes, if power usage is high, or **when its completely over casted, there is a back-up generator, in the outside room, which can be turned on, to charge the batteries, instead of the solar panels.** When the generator is on, we will monitor the battery levels on our side until the batteries are fully charged.

There are rechargeable bulbs installed throughout the home in all ceiling lights and in the bedroom lamps. You'll never be left in the dark. The WiFi is powered with a back-up device as well and will remain on when the solar power goes off. So, you will not even know that the power is off. As the sun rises the next morning, the solar system recharges, typically within an hour after sunrise the solar system will recharge. The fridge will remain cold through the nights. And don't worry about your hot showers - our separate gas-powered system ensures a constant supply of hot water, independent of solar power. Note that there are no power plugs in the loft, we offer portable lights with a USB charger, to charge your phone. There are ceiling lights in the loft.


WARM WATER:

Experience the luxury of our gas-powered hot water system, designed for optimal efficiency. While we've equipped the en-suite bathroom and kitchen with one geyser, and the main bathroom with another, **we recommend staggering shower times for the most consistent and enjoyable experience.** This thoughtful approach ensures that every guest can indulge in the perfect shower. In the rare event during longer showers, you might occur a delay in the hot water for a few seconds, this happens when the geyser water is depleted and quickly need to reheat the filled geyser. Just be patient, the warm water will return in a few seconds.

CHECK IN:

We offer a self-check-in system ensures a seamless arrival experience, allowing you to begin your stay with ease and flexibility. **Upon reaching our property, you'll find a secure lock-box conveniently located at the main entrance near the braai area. The key code will be provided before check in.** The key chain includes everything you need: the front door key, garbage bin key, a lock keys for the gates (if you wish to lock the gates) and alarm remote control.





Both entrance gates have chains and 2 locks. At the main gate is a lock with a PIN code, which will be the same as our check-in PIN and the other gate at the farm side has a standard lock, the lock key is in the key chain. As mentioned, the area is very safe, but we offer the extra peace of mind, if you want to secure your vehicles inside the yard. We also included the key for the generator room.


CHECK OUT:

Checkout time is at 11:00, please leave the key set in the key box and please ensure to turn on the alarm. Please settle any outstanding snack bar charges and inform us of any accidental breakages. Your honesty and cooperation help us maintain our high standards of service.

ALARM SYSTEM:

Disarming the alarm is effortless – just press the "unlock" button on the remote on the main key set. When you're ready to explore the breathtaking Garden Route, securing the property is just as simple. Press the "locked" button to activate the alarm before you leave. Rest assured; our alarm system is designed with your peace of mind in mind. It's primarily in place to detect any curious wildlife that may wander onto the property and gain access to the house. The admin office will be notified of any alarmed entries, when the alarm is not deactivated upon entry.

While our area boasts remarkable safety, we've implemented additional measures for your peace of mind. Our discreet camera system monitors for any wildlife activity, particularly our baboon friends. To safeguard your belongings, we recommend keeping valuables secure when you're out exploring. Remember to close all windows and doors when leaving and to turn on the sensor alarm system in the house – this simple step prevents any unexpected animal visitors. The clearview burglar bars offer an extra layer of protection against any wildlife, but small animals can still enter the house when you are not at home. We hereby please request to close all windows when you are not at the property. There is electrified fencing around the house's roof, to prevent the baboons to climb onto the roof. We have outside cameras installed and one at the snack bar, they allow us to keep a watchful eye on the local wildlife, ensure the security of both you and the property and to confirm occupancy. Which is crucial feature given our secluded location. **Rest assured, these cameras are not actively monitored, but rather serve as a silent guardian, preserving the tranquillity of your stay.**



While we believe these cameras enhance your experience and safety, we fully respect your right to privacy. **Should you have any concerns, you're welcome to cover the cameras during your stay.**

We would like to clarify that the multiple locks on our antique wooden doors are a precautionary measure against strong winds, not due to any security concerns.

WILDLIFE:

For a fascinating insight into local wildlife, don't miss the informative baboon: guide in the hallway – it's a must-read!

We take your safety and comfort seriously at Garden Route Trail House. To ensure a pleasant stay for all guests and maintain our pristine natural surroundings, we kindly request your cooperation with our wildlife-friendly policies. Our area is known for its curious baboon population, which can be attracted by unattended food. To prevent any unwanted visitors, we've implemented a secure waste management system. For your convenience and the protection of local wildlife, we provide a locked outdoor garbage bin. (situated next to the braai) We strongly encourage you to dispose of all waste in this designated container and secure it immediately after use. The bin keys are conveniently attached to your main key set. By following these simple guidelines, you'll not only enhance your own experience but also contribute to the preservation of our unique ecosystem.

NOU GAAN ONS BRAAI!

Transform your outdoor cooking experience with the versatile "Pizza Braai"! This innovative appliance isn't just for pizzas – it's your gateway to a world of culinary possibilities. From mouthwatering lasagnas to hearty potjies, and of course, traditional braai favorites, the Pizza Braai does it all. Imagine the convenience of your home oven combined with the rich, smoky flavors of outdoor cooking. With the Pizza Braai, you're not just preparing meals; you're creating unforgettable dining experiences right in your backyard.

<https://pizzabraai.co.za/pages/recipes> The Pizza Braai can be found under the inside braai area.

We've also provided a premium braai bag and mat, and two Braai cooking books opening a world of outdoor cooking possibilities. Get ready to create unforgettable meals under the stars!

ENTERTAINMENT: – view our website for more information –
<https://gardenroutetrailhouse.co.za/activities-on-site/>

Boredom is not an option at Garden Route Trail House. Discover a treasure trove of games in the wooden chest in the loft, perfect for cozy evenings in. For those quiet moments, peruse our carefully curated selection of reading materials in the lounge – there's something for every taste.

PLEASE RESPECT THE GAMES AND READING MATERIAL AND REPACK NEATLY AFTER USE, ADULT GAMES ARE FOR ADULTS ONLY, WE OFFER KIDDIES GAMES AS WELL.

Elevate your entertainment experience with our Android TV box, offering seamless access to a world of premium streaming services. Immerse yourself in an unparalleled selection of content from industry giants like Netflix, Disney Plus, Prime Video, and Showmax. This feature-rich addition to our accommodations ensures you'll never miss a moment of your favourite shows, movies, or exclusive content during your stay. **Please note to turn on the Android box on the Android box remote after switching on the TV screen.**

Our property offers a unique opportunity to disconnect from the digital world and reconnect with nature, yourself, and your loved ones. Far from the bustle of town, nestled in the heart of pristine wilderness, we provide an off-grid experience that will rejuvenate your spirit and create lasting memories.

At Garden Route Trail House, we believe in the power of genuine human connection and self-discovery. **Here, you'll find yourself naturally drawn to activities that foster togetherness and personal growth:**

- Engage in stimulating conversations that last well into the night
- Rediscover the joy of reading a good book in serene surroundings
- Participate in group activities that bring people closer
- Practice the art of mindfulness, simply sitting and being present in the moment and enjoying nature.

Our secluded location offers a rare chance to break free from the constant notifications and screen time that dominate modern life.

Instead of being tethered to your devices, you'll find yourself immersed in the breathtaking beauty of nature, fostering deeper connections with your companions and yourself.

If you're seeking a transformative experience that goes beyond the ordinary, Garden Route Trail House is your ideal destination. Embrace the serenity, challenge yourself to unplug, and discover the incredible rewards of a truly off-grid adventure. Your journey to a more connected, relaxed, and fulfilled you starts here.

WALKING TRAILS:

Please view our website for more information –

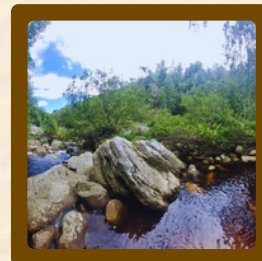
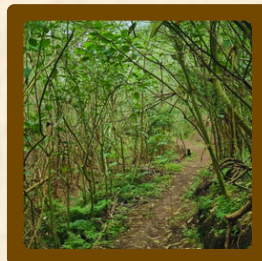
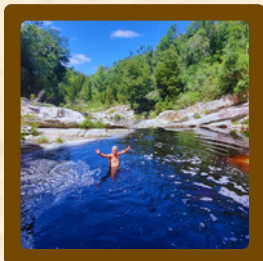
<https://gardenroutetrailhouse.co.za/activities-on-site/>

Nature enthusiasts, rejoice! The Garden Route Trail Park offers an extensive network of walking ADVENTURE trails and natural rock pools at your doorstep. While these ADVENTURE trails are not maintained by Garden Route Trail House, we encourage you to explore them responsibly.


This extraordinary experience is more than just a hike; it's a journey into nature's secret paradise. There is a short route directly to the rock pools, please follow the signs which states "NATURAL ROCK POOLS" this route is about 1.4km, just a short distance to the breathtaking rock pools. Currently this path is the only path maintained by the Garden Route Trail House.

To start the trail to the rock pools, please walk upwards towards the mountain, pass the dam, when you enter the forest, you will see a path to your left, with information signs at the start of the pathway.

Continue with this trail until you see the first sign showcasing "NATURAL ROCK POOLS" guiding you to go left, stay on this trail and follow the signs and the arrows marked on the trees, until you hear the waterfalls. The last piece of the path is very challenging, so please be careful with every step.



For your safety and to preserve our beautiful natural environment, we kindly ask that you remain on the designated trails at all times, to ensure that you do not get lost. Immerse yourself in the beauty of our walking trails and inviting waters, but please note that swimming and trail exploration are at your own discretion.



While we invite you to explore and enjoy, we urge you to exercise caution. The rocks can be slippery, so walk carefully through the pools and stay alert and mindful of your surroundings.

This journey offers a perfect blend of challenge and natural beauty. **To fully enjoy this immersive experience, we recommend wearing comfortable, sturdy shoes and carrying ample water.** As you navigate the diverse terrain, including scenic ridges and natural obstacles, stay alert and move with care – each step brings you closer to breathtaking views and unforgettable memories.

While the trails wind through SANPARK grounds, path maintenance is primarily SANPARK's responsibility, we do try to maintain certain parts of the trail, some parts of the path have some obstacles, like for example fallen trees, branches and overgrown ferns. It's not an easy walk in the park, that is why we called it adventure trails. As the trail park closed down, our sole responsibility is set out for the Trail House and not on the trails.

Please note that cell phone reception will be limited in the lower sections of the trails, adding to the sense of escape from the digital world. We recommend informing someone of your hiking plans before setting out. By taking these simple precautions, you're free to immerse yourself fully in the awe-inspiring natural surroundings.

When hiking, you can take important precautions to stay safe, including:

- Check the weather: Avoid hiking in bad weather, especially on hilly or mountainous terrain, where there's a higher risk of landslides.
- Hike responsibly: Respect the environment by staying on trails, removing trash, and avoiding hiking at dawn or dusk when animals are most active.
- Be aware of wildlife: Stay calm, keep your distance, and avoid sudden movements when encountering wildlife. You can also wear long pants and use insect repellent to protect against bites and stings.
- Bring the right gear: Pack appropriate clothing, footwear, food, water, navigation tools, communication devices, and first aid supplies.
- Stay on trail: All trails will lead out, please take a GPS or a cellphone with you to check where is the Trail House or the rock pools. Note that the walking trails are not all listed on Google, so rather try to remain on the trails until you reach your destination.

While some sections may appear more rugged and untamed, rest assured that these trails have been established for years, just continue until you get on the open path again.

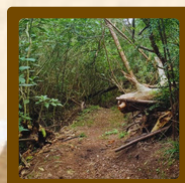
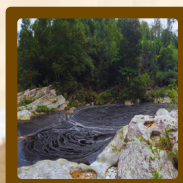
- Stay hydrated: Bring enough water to stay hydrated and take frequent sips.
- Bring snacks: Bring non-perishable snacks to avoid getting hungry from exertion.
- Let someone know: Let someone know where you're going and plan to be back.
- Avoid headphones: Don't wear headphones while hiking

For pet owners planning to explore our trails with their canine companions, to safeguard your dogs against ticks, we urge you to apply high-quality tick prevention before your visit. While our trails offer breathtaking scenery, we advise keeping your pets on open paths and securely leashed. This precaution not only protects the local ecosystem but also significantly reduces the risk of tick encounters.

For the well-being of your pets, we suggest embarking on shorter walks along open pathways, would not suggest the trail to the rock pools with your dogs, as it could be too challenging for them.

For those seeking a taste of nature without the full hiking commitment, immerse yourself in the breathtaking scenery surrounding our trails, perfect for capturing stunning selfies and creating lasting memories. The easily accessible paths provide the ideal backdrop for nature enthusiasts, allowing you to experience the awe-inspiring beauty of the Garden Route without breaking a sweat. It's a rejuvenating escape that will leave you feeling refreshed and connected to the raw beauty of the Garden Route.

Whether you're a photography enthusiast or simply looking to rejuvenate your spirit, our picturesque trails offer the perfect opportunity to connect with nature on your terms. Don't miss out on this chance to witness the raw beauty of the Garden Route – your followers will thank you!



ROCK AND ROLL:

At the Trail House, we invite you to immerse yourself in your favorite music without any restrictions. We've strategically placed Bluetooth-enabled speaker light in the braai area allowing you to create the perfect ambiance wherever you choose to unwind.

Connecting to the Bluetooth speaker lights is effortless. Simply activate your device's Bluetooth, pair with our "Speaker Light L2," and let your personal playlist become the soundtrack to your unforgettable stay. Whether you're hosting a lively gathering or seeking a tranquil evening under the stars, our versatile audio options cater to every mood and occasion.

BLUETOOTH SPEAKER OUTSIDE AT BRAAI AREA: SPEAKER LIGHT L2

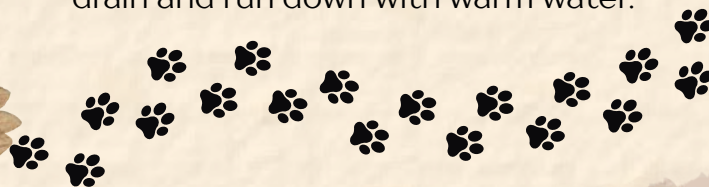



PET FRIENDLY:

We offer a pet-friendly stay in the heart of nature. We understand the joy of traveling with your furry companions, but we kindly ask that you follow our guidelines to ensure a safe and enjoyable experience for all guests.

For the safety of your pets and local wildlife, please keep your dogs supervised at all times. The surrounding forests, while beautiful, can pose risks due to the presence of baboons. We strongly recommend keeping your dogs on a leash during outdoor activities. Additionally, we ask that you respect the farm's livestock by keeping your pets away from the grazing cows. Your dogs are welcome to join you on the walking trails, if not trained, we would recommend keeping them on a leash for their own safety. Or when you leave your fur-children at home, please ensure that they are safely locked inside and that all breakable or chewable items are out of reach.

For the protection of your pets, we strongly recommend using Bravecto or any tick prevention during your stay. Our lush surroundings, while beautiful, can harbor ticks in the longer grass. Bravecto's powerful formula ensures that any ticks your dog may encounter will die and fall off within 12 hours, allowing you to enjoy worry-free walks and outdoor adventures. If you want to avoid the ticks, please keep your dogs out of any long grass and bushes. If you need to remove any unwanted ticks, take a bowl of warm water, while you remove the ticks, put them in the bowl of water and then dispose the bowl of water in the drain, make sure that all the ticks go down the drain and run down with warm water.





To maintain our high standards of cleanliness and comfort for all guests, we kindly request that you bring your own bedding, and furniture covers if your pets share your sleeping space or lounge on our couches. This simple step allows us to provide a pristine environment for every visitor while ensuring your furry friends feel right at home.

PRIVATE PROPERTY:


As valued guests of Garden Route Trail House, you'll be staying on the private property of Dormehl Farms. To preserve the natural beauty and integrity of the area, we kindly request that you limit your exploration within the Dormehl Farms property. Please stay on the destination routes from and to the Garden Route Trail House. The nearby trails are part of the stunning SAN Parks, and we encourage you to enjoy them responsibly.

- Please refrain from littering in all areas
 - Do not start fires in unauthorized areas – the designated fire areas are in the outside braai and inside braai – We kindly request that you extinguish all fires completely before leaving them unattended
 - Hunting is strictly prohibited on Dormehl Farms and in SAN Parks or in any surrounding areas.
 - Any damages to the property and livestock of Dormehl Farms will be the liability of the guests and be held accountable exclusively.
- By adhering to these guidelines, you'll help us maintain the pristine environment that makes Garden Route Trail House a truly unique destination. Together, we can ensure that this natural paradise remains unspoiled for future generations of adventurers.

At Garden Route Trail House, we've crafted an experience that combines eco-friendly luxury, unparalleled natural beauty, and thoughtful amenities. We're confident that your stay with us will be an unforgettable journey into the heart of the Garden Route's magic. Embrace the adventure, relax in comfort, and create memories that will last a lifetime!

WI-FI

Need to work while on holiday? We offer a robust Vodacom router, ensuring excellent signal strength up to 10 Mbps, throughout your stay. For your convenience, we've strategically placed an electrical extension under the stairway, perfect for powering up your laptop or other devices. At Garden Route Trail House, we understand the importance of staying connected, even while you're away.



Enjoy the freedom to work or relax, knowing that reliable internet and accessible power are always at your fingertips.

WIFI NAME: GARDEN ROUTE TRAIL HOUSE

WIFI PASSWORD: TRAIL 123


Back-up password for the Vodacom main router, this password must be used when the power it out and the wifi is on the back-up UPS - s]5~_CDfoKi~GF?k

WEATHER:

Due to our off-grid system, we don't offer air conditioning, our thoughtfully designed spaces harness the area's natural cooling breeze as each room has its own private exit. Enjoy the refreshing fresh mountain breeze that flows through open doors, providing natural comfort on warmer days. As night falls, the temperature drops, creating a perfect sleeping environment. In the summer we will provide fans and during the winter gas heaters.

Embrace the Garden Route's diverse climate by packing versatile clothing. With 60% of the year bringing overcast days, you'll appreciate having warm layers on hand. This ever-changing weather adds to the area's allure, offering a dynamic backdrop for your adventures.

In cooler months, cozy up with our gas geysers and gather around the indoor braai - a quintessential South African fireplace that not only warms the house but also creates an inviting atmosphere for memorable evenings. These features, combined with our eco-friendly approach, make Garden Route Trail House the perfect choice for those seeking an authentic, immersive experience in harmony with nature. As the sun sets, we invite you to bask in the warm glow of our citronella candles, strategically placed to create a natural barrier against unwanted insects. To preserve this serene environment and ensure your peaceful slumber, we recommend turning off unnecessary lights after dusk. This simple act not only reduces insect activity, saves power, but also allows you to fully immerse yourself in the magical nighttime sounds of the surrounding wilderness.

The background features a collage of dried flowers, including pink and brown blooms, and faint Latin text on a parchment-like texture. The text is partially obscured by the floral elements.

WASHING SERVICE: – only wash, dry and fold. No ironing.

Experience the ultimate convenience with our complimentary clothing washing service, available to all guests staying 3 days or longer. While we strive for efficiency, please allow up to 48 hours for completion and provide us with 24 hours' notice to guarantee this service.

For guests staying less than 3 days, don't worry – you can still enjoy this luxury service for a nominal fee of R450 per load. While we take the utmost care with your belongings, we kindly ask guests to note that we cannot assume responsibility for any unforeseen damages or losses during the washing process. **Please inform us if you would like to use this service.**

We also provide a drying rack and hand washing powder, if you want to wash something small at the house yourself.

ORDERING OF WOOD AND ICE:

We offer wood and ice for sale at our admin office (we are based next to the Trail Park), ensuring your stay is comfortable and enjoyable. For your added convenience, **we provide a delivery service with just 24 hours' notice. While a nominal fee of R100 applies for delivery,** it's a small price for the luxury of having essentials brought right to your doorstep. Don't hesitate to reach out! Contact us via WhatsApp at 060 975 9376 for current pricing and to arrange your delivery.

COMPLIMENTARY AMENITIES:

Indulge in our array of thoughtfully curated complimentary amenities, designed to enhance your stay at Garden Route Trail House. Savor the taste of farm-fresh eggs and creamy farm-fresh milk, from the farm of the property, **please note that we cannot offer any refills of the milk or eggs at this stage.** Cozy up by the fireplace with our generous supply of 30 wood pieces and convenient fire lighters. Start your day right with our delectable fresh rusks and aromatic coffee bar. Note that this is a self catering establishment and we do not offer any food services.

We've also taken care of the little details that make a big difference. Our selection of spices will inspire your culinary adventures, while our premium bathroom amenities ensure comfort and luxury throughout your stay.

To maintain the highest quality of your experience, we kindly request: Please refrigerate and consume the fresh milk within two days of your arrival.

The milk container, spice holders, and rusk container are property of Trail House and should remain on-site.

While the Trail House was formerly part of a premier bike trail park, please note that the Trail Park has been closed since 2023. As the Trail House management, we are not responsible for maintaining any of the trails surrounding the property. However, this presents a unique opportunity for our guests to experience the raw beauty of nature at their own pace.

We invite our adventurous guests to explore the surrounding trails for walking or bike riding at their leisure. While we no longer offer facilities as a bike park, the trails remain accessible, offering a more intimate and personal outdoor experience.

By staying at the Garden Route Trail House, you're not just booking accommodation – you're unlocking access to a network of scenic trails right at your doorstep. Whether you're an avid cyclist looking for a challenging ride or a nature enthusiast eager for a peaceful walk, our location offers the perfect base for your outdoor adventures. Please note that the Garden Trail Park remain closed, ONLY the Garden Route Trail House is open for reservations. The walking trails can only be accessed by the Trail House guests or by arranged events. No daily visitors are allowed.

NATURAL ROCK POOLS:

Embark on an extraordinary adventure and immerse yourself in the breathtaking beauty of our hidden rock pools! This isn't just a hike; it's a journey into the heart of nature's wonders.

A mere 1.4km hike to a world of awe-inspiring sights. Nestled within the lush Garden Route Forests, you'll discover massive rock pools, with its waterfalls, and majestic boulders that will leave you spellbound. Picture yourself basking in the serenity of rushing waterfalls, soaking up the warm sun, and cooling off in the crystal-clear mountain waters.

Don't miss this chance to create unforgettable memories. Pack your picnic basket and prepare for an experience that will rejuvenate your soul and awaken your senses. Our unique location offers a perfect blend of adventure and tranquillity that you simply won't find anywhere else.

At Garden Route Trail House, we don't just offer accommodation; we provide a gateway to nature's most spectacular treasures. Come, explore, and let the magic of our rock pools transform your stay into an extraordinary escape!



RECENT REVIEWS TO GIVE YOU MORE INFORMATION ABOUT YOUR STAY:

Henrico- April 2025

We stayed over this past weekend, it is an amazing house with everything you need for a comfortable stay, including fresh farm milk and eggs.

Everything is clean and neat.

Location is perfect for a breakaway out of the busy areas, lovely and secluded (Enough to make you think you took a wrong turn on the way there)

We did the hike to the rock pools, great adventure, although I would not recommend the hike with small children, as the last bit is a bit tricky and steep. I would recommend going with a higher clearance vehicle as the gravel trail does have some high areas in the centre, but a sedan should make it if you drive carefully and do not mind the odd bump and scratch on the underside. - But definitely take the longer scenic route, as the shorter route requires some 4x4ing. The Bluetooth speaker in the braai area light was a really nice touch.

Rooms: 5/5 Service: 5/5 Location: 5/5 Rooms 5/5

Comfortable beds, clean linen

Nearby activities

Easy access to explore Knysna, Wilderness, Sedgefield and the surroundings

Safety

Although it is very secluded, we did not feel unsafe once

Walkability

Lots of open space for long walks as well as some trails and hiking

Food and drinks

The snack bar is a nice touch and they give you proper farm milk and eggs for your stay

Hotel highlights

Great view, Quiet, Great value

Mariette - March 2025

We had an amazing time. The house has everything you need and more. Zani was very helpful and an excellent hostess. We will definitely be back.

Rooms: 5/5 Service: 5/5 Location: 5/5



Jacobine February 2025 - From Netherlands

A very nice off the grid house in a beautiful environment. Nice decor. Nice outdoor terrace. Very well cared for on arrival with all sorts of nice amenities. Prior good information received and also during stay the owner was easily accessible.

Shahbaz Muhammad March 2025

Excellent location we enjoyed our stay on this lovely place
Rooms: 5/5 Service: 5/5 Location: 5/5

Emile Etzebeth March 2025

Thank you to Cecil and all involved in inviting us over to experience the garden route trail house what an absolute gem completely off grid just what we needed to get out from the city life, the views are breathtaking and very peaceful, pet and child friendly I highly recommend this amazing get away. Expect us back again !! Thank you

Linda March 2025

We have just stayed at this lovely property for three nights. We had an amazing time. The house is extremely cosy and very clean. There is everything you need and more. We took our two dogs with us and they had a blast, the garden is safely fenced off and the nearby trails were great for walking them. The house is in a very safe area. Every bedroom has a beautiful view of fields and mountains. Extremely peaceful with just the sound of the birds. We can highly recommend garden route trail house, and we will certainly use again.

Rooms: 5/5 Service: 5/5 Location: 5/5

Brian H March 2025

Stunning cottage, exceeded our expectations. Fantastic and peaceful.

Renier P January 2025

Seker die beste toegeruste huis waarin ons al naweek gehou het. Alles puik uiteengesit. Awesome gasvryheid. Eienaars altyd beskikbaar. Ek sal weer en weer soontoe gaan. Ons nuwe huis weg van die huis af.

Velma January 2025

Lovely off-grid house in beautiful and peaceful surroundings. Very well appointed and perfect for a family getaway or those who want to get away from city noise. Lots of hikes in the surrounding area and Zani is a very responsive and helpful host. Please note that the last 4km's of the road to the house is rocky and you may struggle with a normal car. Fresh milk and farm eggs was such a special addition and they have done so much to make sure your stay is comfortable. Space is fenced off so great for dogs. Lots of extras and special touches.

Taryn December 2024

Beautiful farm house, kitted out with everything you can think of. Very homely. Awesome hostess and great overall experience!!



INDEMNITY, WAIVER & DISCLAIMER

Garden Route Trail House prioritizes your safety and enjoyment. By entering our premises or participating in activities, you agree to our indemnity terms. You accept responsibility for your safety and agree to follow warning notices and instructions. Be aware of potential risks, including outdoor hazards and electrical dangers. We provide assistance out of goodwill, without admitting fault or liability. While we maintain a secure environment, we're not responsible for lost, damaged, or stolen personal belongings.

We offer pet-friendly accommodation, but you're responsible for your pets' behaviour and any damages they cause. Pets must be leashed outside the property. CCTV cameras monitor wildlife on the premises.

Garden Route Trail House is a registered business (Reg. No. 2021/380868/07) operating as Garden Route Trail House Pty Ltd.

TERMS AND CONDITIONS OF YOUR STAY

We provide self-catering accommodation without additional services like meals, transport, or events. Quote totals won't be reduced for fewer guests than specified.

In case of double booking, the manager's decision is final, with full refunds for unaccommodated guests.

Reservations require a deposit payment. Full payment is due 30 days prior to arrival for peak periods. For the rest of the year, a 50% deposit is required 30 days before arrival, with the balance due at check-in.

Cancellations within 7 days of arrival forfeit the full deposit. No exceptions are made for personal emergencies. We recommend travel insurance for unexpected situations. Guests are liable for damages to the property. Rates are subject to change without notice.

Check-in is between 14:00 and 20:00, and check-out is by 11:00 unless arranged otherwise. Unauthorized visitors incur a fee of R50 per person per day.

We expect high standards of personal conduct and don't tolerate substance abuse.

Guests are responsible for proper use of plumbing and electrical facilities. No dangerous items, substances, or weapons are allowed on the property.

Smoking is permitted in outside areas. Pets are allowed with prior confirmation.

Guests are liable for any loss or damages to the property.

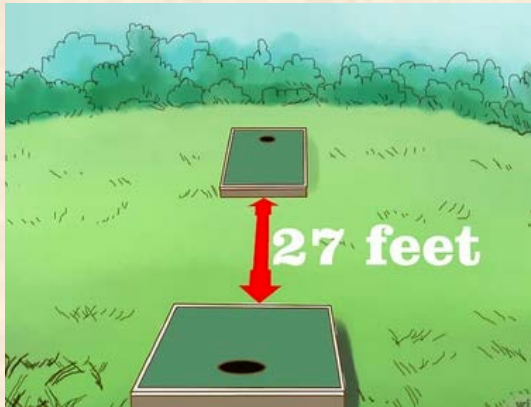
By booking or entering an agreement with Garden Route Trail House, you accept our terms and conditions. You enter the premises at your own risk, acknowledging potential encounters with wildlife and farm animals.

Garden Route Trail House is not responsible for accidents, injuries, or damages occurring on the premises or during activities. You agree to indemnify us against any claims made by accompanying persons or those under your control.

We strive to provide a memorable experience while ensuring all parties understand our policies. If you have any questions or concerns, please contact us.

A Complete Guide to Playing Bean bag toss game which is at the back patio.

Play cornhole with 2 to 4 players split into 2 teams. Position the 2 boards 27 feet (8.2 m) apart and facing each other. Each team alternates throwing bean bags at the opposite board. The first team that reaches 21 points wins.



You can play Bean bag toss with two or four players. Players should be divided evenly into two teams. Two-player teams will have a player at each goal board, and single person teams will always throw from the same board.

The rules of bean bag toss are relatively simple.

Each goal board begins with four bean bags a piece. The players at each goal board should alternate throwing bean bags at the opposite goal board until all four are thrown on one side. Then the opposite board players should do the same. This is repeated until a team reaches 21 points in total.

All throws should be made from behind the front of the board in an imaginary 3-foot wide pitcher's box that extends the entire length of both sides of the board.

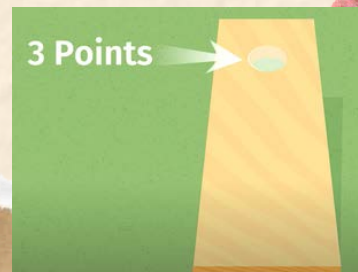
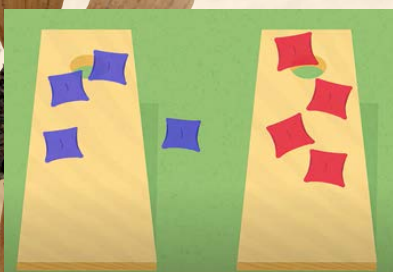
Bean bags that make it through the hole in the other team's goal board are worth three points. Bags that touch and remain on the board earn a single point. Bags knocked into the hole by another bag are also worth three points.

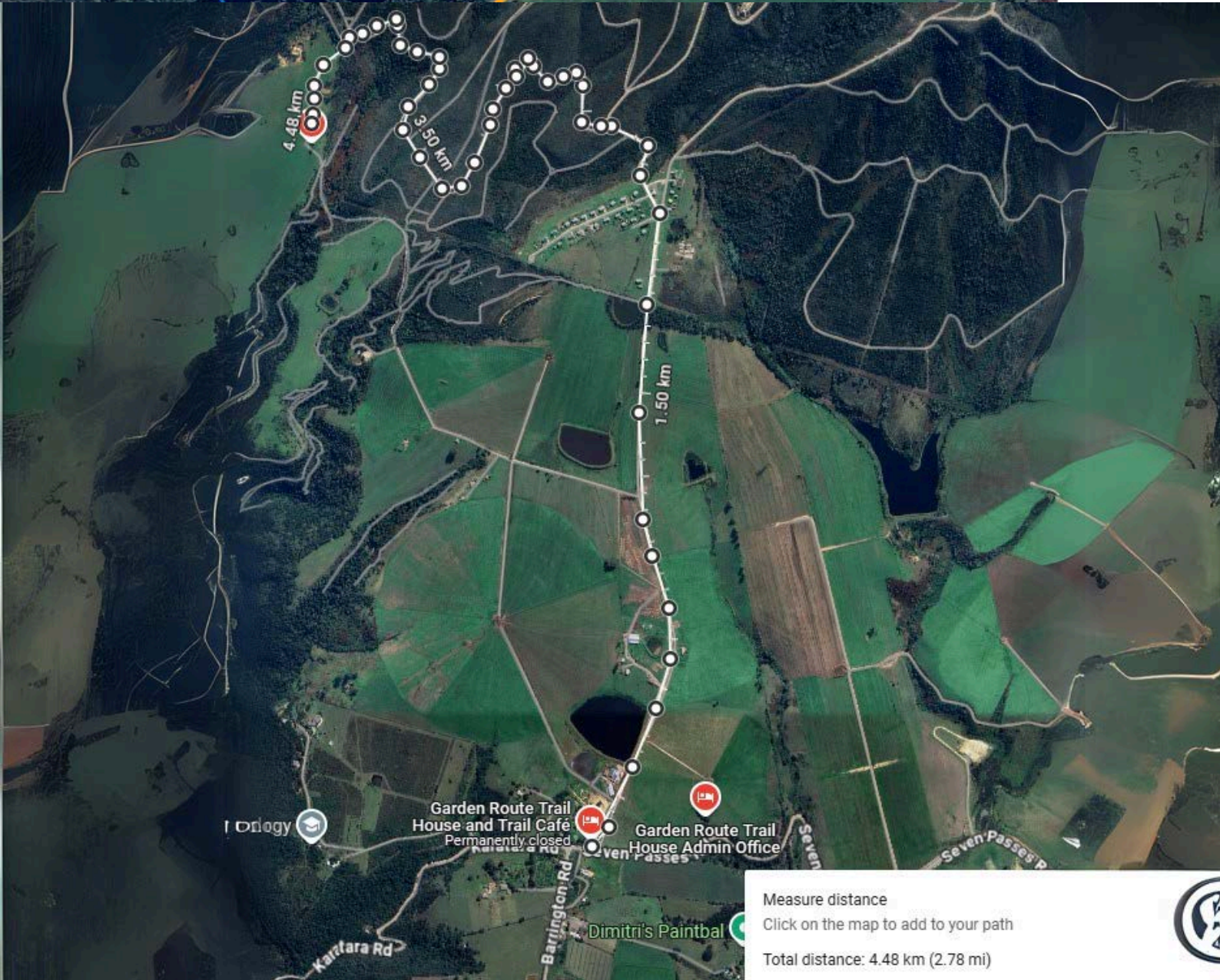
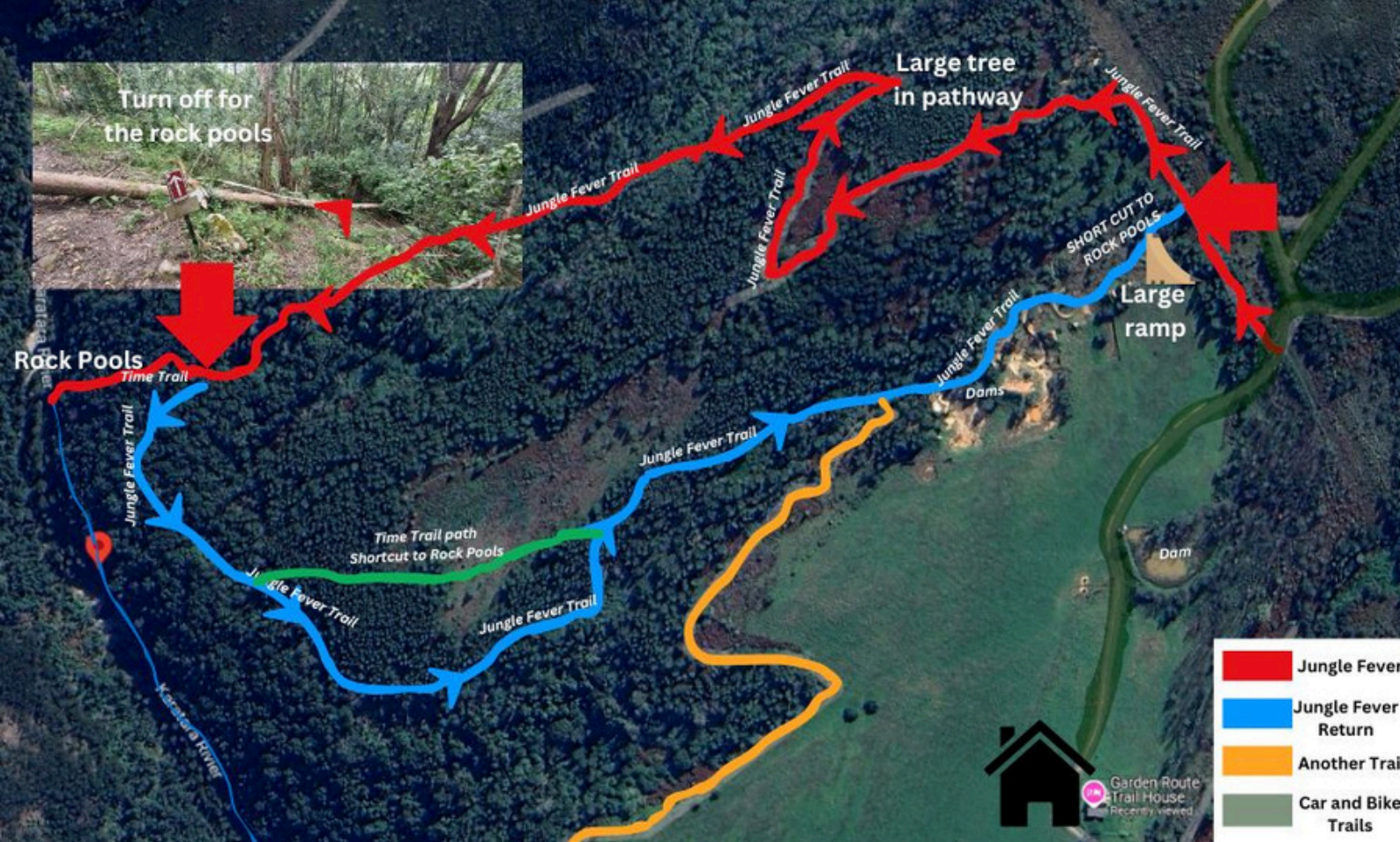
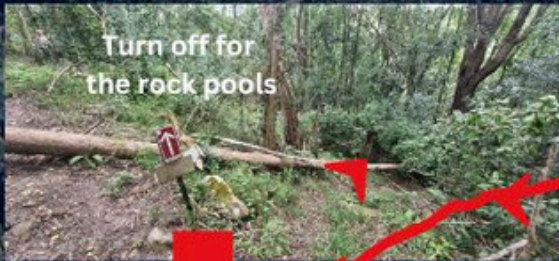
The end score of each inning is determined by cancellation scoring. This where you deduct the score of the lower point team from the point leader of that inning. Don't forget that bags knocked through the hole by another bean bag during play are worth the full three points. For example, if in a single inning Team A scored five points and Team B scored three points, the end score of that inning would be two points in Team A's favor.

After you've calculated the points, you'll know which team was the point winner for that inning. This is the team that begins throwing the next round. If neither team scored in the inning, the first toss of the next round goes to the final pitcher of the preceding inning.

Continue playing innings until a team reaches 21 points. When that happens, the game is finished.

We do provide score sheets, which is in the wooden chest in the loft.





Measure distance
 Click on the map to add to your path
 Total distance: 4.48 km (2.78 mi)



Is there a toaster?

While our off-grid system limits the use of high-powered electronic devices, we've found an innovative solution that enhances your stay without compromising our eco-friendly ethos. Introducing the New Round Folding Portable Stainless Steel Toast Grill – a perfect blend of functionality and sustainability.

Experience the joy of preparing your own toast with this ingenious device. Simply place your bread in the specially designed trays and set them on the heated gas stove plate. Watch as your bread transforms into perfectly crisp toast, turning golden brown on each side. It's not just breakfast; it's an experience that connects you with the simplicity of off-grid living.

We've provided two of these remarkable grills for your convenience, ensuring you can prepare multiple servings simultaneously. You'll find them readily accessible in the kitchen area, conveniently located next to the water dispenser. This thoughtful placement allows you to effortlessly integrate this unique toasting method into your morning routine.



We also offer versatile 2 stove top sandwich masters, designed to elevate your culinary experience. These innovative kitchen tools go beyond traditional sandwiches, empowering you to create a variety of delectable meals with ease. From fluffy pancakes and perfectly cooked omelets to gourmet sandwiches and even sizzling steaks, our multipurpose snackwich makers open up a world of culinary possibilities, making every meal an adventure in flavor and convenience.



**Egg bacon,
enjoy delicious
and healthy**



Pizza Braai Ideas



Broodjies



Smashed Potatoes



Broodjie Bun Recipe



Salmon



Weekend Feast

Pizza Braai Ideas



How to use the Pizza Braai:

Pizza Braai™

ORIGINAL • DURABLE • RELIABLE

PIZZA BRAAI INSTRUCTIONS

- FIRST TIME USE ONLY:**
 - Remove from packaging
 - Place box in your braai
 - Adjust the feet (turn the bolts) to the desired height
 - NB – Please ensure box is stable and that there is no wobble
- Start your fire on top of box using 7 – 10 pieces of wood depending on wood size.
- After approximately 30 – 40 minutes with the **ORIGINAL** or 40 – 50 minutes with the **XL SERIES** start spreading the coals evenly on top of the box.
- There is no need to wait for the wood to be burned out completely.
- Place 3 – 6 pieces of **coal / embers** from your fire on top under the box/drawer. Rather start with less to prevent burning your pizza base but more coals can be added if needed.
- Now you can start with your pizza.
- The drawer is made of pre-seasoned steel, so no need for flour, semolina.
- Add flour/semolina to the pizza spade and slide your pizza directly into drawer – no need for a pizza tile.
- Close the drawer and set timer for 2 minutes.
- Open drawer, use spatula provide to rotate pizza.
- Close drawer and set timer for 1 – 2 minutes depending on the amount of topping.
- After 3 – 4 minutes pre-baked pizza will be done in the **ORIGINAL** or 4 – 5 minutes in the **XL SERIES**.
- Should you want your pizza base crispier, bake it for another 30 – 60 seconds?
- Homemade bases will take slightly longer.
- Open drawer, remove pizza with spatula and ENJOY!
- Should you want to make a lot of pizzas, just add more wood as needed and keep the fire going.
- Always make fire on top and not on sides as this will result in uneven cooking.

CLEANING INSTRUCTIONS

- Box – Remove the ash from your box and wipe in cooking/olive oil using kitchen towel.
- Drawer – Lift 45° up to remove the drawer.
- Scrape off excess topping or oil with your pizza spade and wipe down with kitchen towel.
- Rub in a light layer of cooking / olive oil in your drawer – the drawer will absorb the oil once it's hot again.
- Do not clean your drawer with soap / chemicals as this will remove your sealing / protective layer.
- Do not scrub the stainless steel with steel wool, brush or rough part of kitchen sponge – only use soft sponge or dishcloth and a stainless steel cleaning agent.
- Rub in some olive / vegetable oil or spray & cook under the drawer to smoothly re-insert the drawer into box.